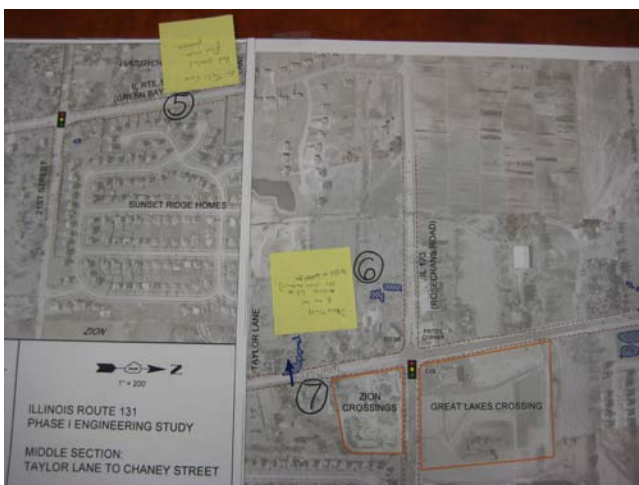


**TABLE #1**

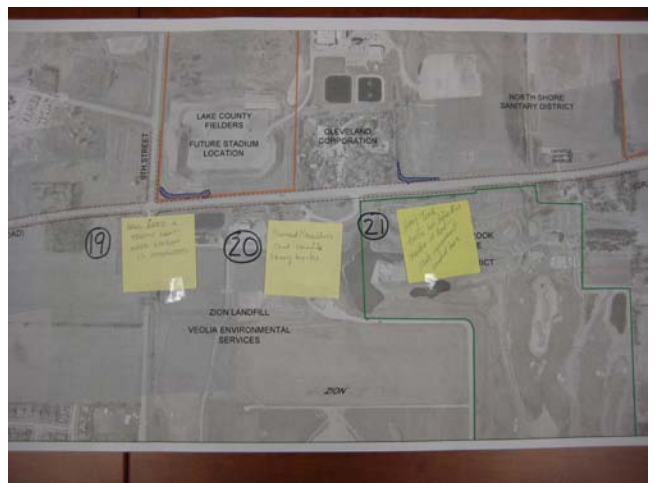
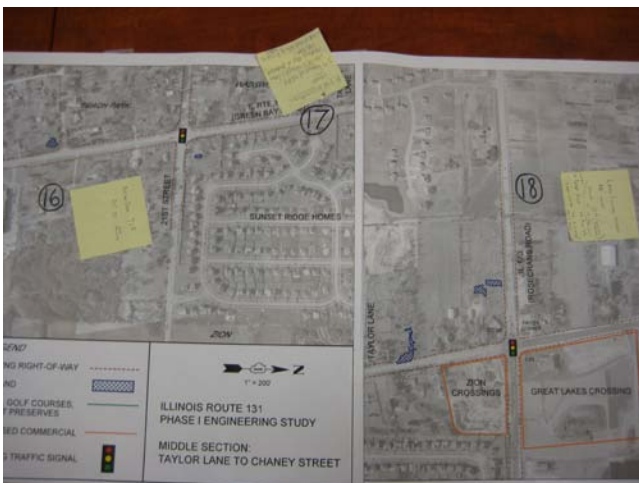
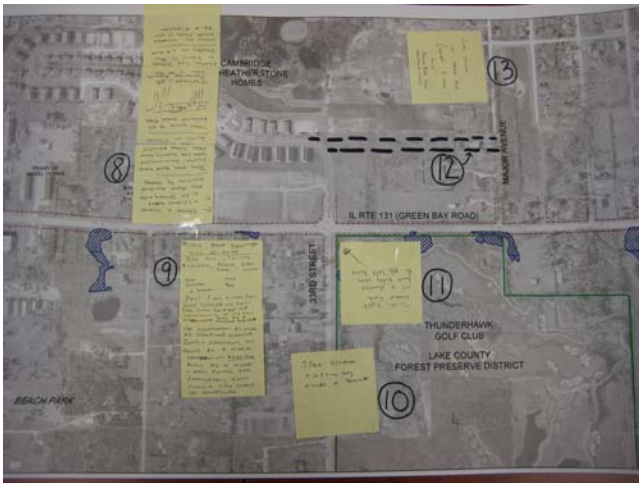
| COMMENT NUMBER | LOCATION   | COMMENT  | CATEGORY              |
|----------------|--|--|-----------------------|
| 1              | Northwest corner of Yorkhouse Road and IL Rte. 131 | "Newly Remodeled Parsonage"  | Misc. Information     |
| 2              | IL Rte. 131 at Zephyr Street                       | "Water leak"   | Drainage              |
| 3              | Crossing IL Rte. 131 near Zephyr Street            | "Runway Ext."  | Airport               |
| 4              | IL Rte. 131 at Kenosha Road / 28th Street          | "Dangerous Intersection"   | Intersection / Signal |
| 5              | IL Rte. 131 at Taylor Lane                         | "Taylor Lane - Bad overland flow route problem"                        | Drainage              |
| 6              | Northwest corner of IL Rte. 131 and Taylor Lane    | "Drain tiles E to W across GB Rd. (by Fire Hydrant) 41335 N Green Bay" | Drainage              |
| 7              | Northwest corner of IL Rte. 131 and Taylor Lane    | "Drain Tiles"  | Drainage              |



**TABLE #2**

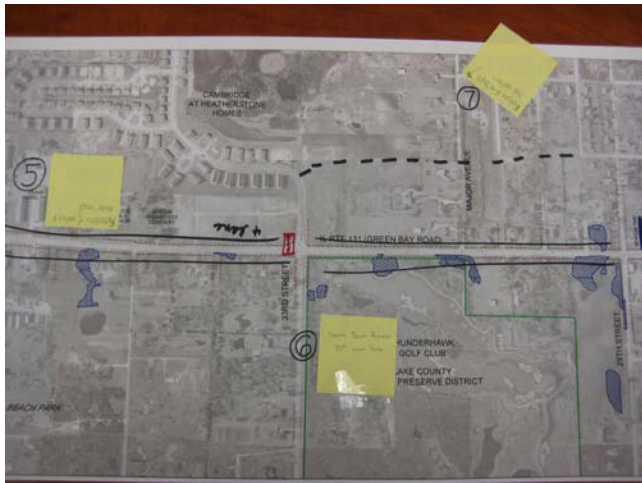
| <b>COMMENT NUMBER</b> | <b>LOCATION</b>   | <b>COMMENT</b>   | <b>CATEGORY</b>        |
|-----------------------|---|--|------------------------|
| 1                     | Along IL Rte. 131 from Sunset Avenue to Beach Road                        | Bike Path  | Pedestrian / Bicycle   |
| 2                     | North of Sunset Avenue  | "Truck traffic - need turn lanes"  | Roadway / Geometrics   |
| 3                     | Adelaide Avenue at IL Rte. 131  | "Take property equally from both East & West sides"  | Roadway / Geometrics   |
| 4                     | Yorkhouse Road at IL Rte. 131   | "Add Turn Lanes @ all signal intersections"  | Intersection / Signal  |
| 5                     | North of Yorkhouse Road   | "Need slower speed limits"   | Roadway / Geometrics   |
| 6                     | Airport Runway  | "Traffic go underneath airstrip (bridge 131)"  | Airport                |
| 7                     | Waukegan Community Sports Complex   | "Create bike lanes to this park"   | Pedestrians / Bicycles |
| 8                     | Two access drives just south of 33rd Street (on west side of IL Rte. 131) | "These 2 ingress & egress roads N[orth] of Sticky Note are both accidents waiting to happen. They are both 2 lanes. People routinely use them for turning around from either direction going in either. These need to be removed, made 4 lanes, stop lights - or synchronized turning lanes or add stop light. People use turning in lanes to pass traffic on WB road. When an accident happens here it will be a disaster."                                       | Roadway / Geometrics   |
| 9                     | South of 33rd Street on east side of IL Rte. 131                          | "This area east side of road has all utilities - electric, phone (under), gas (under), new water (under), new sew[er]. IDOT I am sure can get them @ no cost. The time impact of construction to 173 from Wadsworth may be a significant time factor for construction as well as significant overtime costs - certainly this should be a major concern - <u>West side</u> may be a more viable route for particularly const. costs & time impact of construction." | Roadway / Geometrics   |
| 10                    | 33rd Street at IL Rte. 131  | "33rd Street & Green Bay needs a signal"   | Intersection / Signal  |

|    |   |  |                       |
|----|---|--|-----------------------|
| 11 | 33rd Street at IL Rte. 131                      | "Traffic light needed here all 4 directions have safety issues for <u>a</u> ll left turns."  | Intersection / Signal |
| 12 | Between Wakefield Lane and Major Avenue         | Connect Wakefield Lane to Major Avenue   | Roadway / Geometrics  |
| 13 | Major Avenue at Green Avenue                    | "Fire station on Major Ave. (convert 3-story house - Beach Park Fire Protection District"  | Misc. Information     |
| 14 | Kenosha Road at IL Rte. 131                     | "Kenosha Rd & Green Bay need to be re-configured. Many accidents here - one hit part of Benton Twp Office"   | Intersection / Signal |
| 15 | 27th Street at Green Bay Road                   | "Kenosha Rd. realignment @ 27th?"  | Roadway / Geometrics  |
| 16 | Southwest corner of IL Rte. 131 and 21st Street | "Beach Park TIF - 21st St. and south"  | Misc. Information     |
| 17 | Taylor Lane at IL Rte. 131                      | "R-O-W acquisition issues. +/- 7 homes w/ VERY LIMITED setbacks from existing edge of pavement, +/- 30 feet - look at east side of R-O-W to widen" | Roadway / Geometrics  |
| 18 | 17th Street at IL Rte. 131                      | "Lake County Project 48" main along 17th (Utility Corridor) or IL 173. Contact: Peter Kolb - Dir PW LC. Lake Water to Antioch / Long Grove"        | Utility               |
| 19 | 9th Street and IL Rte. 131                      | "Will need a traffic light when stadium is completed"  | Intersection / Signal |
| 20 | IL Rte. 131 north of 9th Street                 | "Pavement / Shoulders can't handle heavy trucks"   | Roadway / Geometrics  |
| 21 | IL Rte. 131 north of 9th Street                 | "Heavy truck traffic has deteriorated shoulder of road - much improvement needed here"   | Roadway / Geometrics  |



**TABLE #3**

| <b>COMMENT NUMBER</b> | <b>LOCATION</b>   | <b>COMMENT</b>  | <b>CATEGORY</b>        |
|-----------------------|---|---|------------------------|
| 1                     | Sunset Avenue at IL Rte. 131                            | "Capacity"  | Intersection / Signals |
| 2                     | IL Rte. 131 between Nemesis Ave. and Wall Ave.          | "Green Bay between Nemesis & Wall Ave -- Need only 4 lanes left turn signals no median. Need curb & gutter. M.V." | Roadway / Geometrics   |
| 3                     | IL Rte. 131 near Adelaide Avenue                        | "No grassy median in this area - center shared turn lane is needed along with 4 lanes, curb & gutter"             | Roadway / Geometrics   |
| 4                     | IL Rte. 131 near Adelaide Avenue                        | "If ROW needs to be wider take evenly from both sides of road"  | Roadway / Geometrics   |
| 5                     | IL Rte. 131 near Waldo Avenue                           | "Extension of water & sewer lines"  | Utility                |
| 6                     | 33rd Street at IL Rte. 131                              | "Traffic Design Analysis 33rd Impact Study"   | Intersection / Signal  |
| 7                     | Major Avenue at Green Avenue                            | "Future Fire Dept. sub-station"   | Misc. Information      |
| 8                     | 27th Street and Green Avenue                            | "Sump pump outflow to ditches - C & G will prohibit flow? Swale?"   | Drainage               |
| 9                     | IL Rte. 131 near 25th Street / Beach Park Middle School | "Continuous turn lanes, no medians (access issues)"   | Roadway / Geometrics   |
| 10                    | Kennedy Homes Stonebridge Crossing                      | "Wetlands" (2 additional wetlands not delineated)   | Drainage               |
| 11                    | 9th Street at IL Rte. 131                               | Signal needed   | Intersection / Signal  |
| 12                    | 9th Street at IL Rte. 131                               | "Access to Stadium?"  | Roadway / Geometrics   |
| 13                    | Entire length of project                                | 4 Lanes   | Roadway / Geometrics   |
| 14                    | Wakefield Lane to Adelphi Avenue                        | Connect Wakefield Lane to Adelphi Avenue  | Roadway / Geometrics   |
| 15                    | 33rd Street at IL Rte. 131                              | Signal needed   | Intersection / Signal  |
| 16                    | Northeast wedge between IL Rte. 131 and Kenosha Road    | "check for new <u>wetland</u> !"  | Drainage               |



**TABLE #4**

| COMMENT NUMBER | LOCATION  | COMMENT   | CATEGORY              |
|----------------|---|---|-----------------------|
| 1              | Vermont Avenue at IL Rte. 131   | "Landscaping near R.O.W. on east side of telephone pole line" | Misc. Information     |
| 2              | 33rd Street and IL Rte. 131   | "Light needed"  | Intersection / Signal |
| 3              | Major Avenue and IL Rte. 131, 29th Street and IL Rte. 131, Kenosha Road and IL Rte. 131 | "Difficult to make turns"                                     | Intersection / Signal |
| 4              | Kenosha Road and IL Rte. 131  | "Traffic too fast turning right onto Kenosha"                 | Intersection / Signal |
| 5              | Northeast wedge between IL Rte. 131 and Kenosha Road                                    | "verify wetland limits"                                       | Drainage              |
| 6              | North of Kenosha Road / IL Rte. 131 intersection  | "Sanitary Sewer pumping station in 25th St. ROW"              | Utility               |
| 7              | Northeast wedge between IL Rte. 131 and Kenosha Road                                    | "Flooding"  | Drainage              |
| 8              | North of 28th Street on east side of IL Rte. 131  | "Flooding issue"  | Drainage              |
| 9              | 9th Street at IL Rte. 131   | "Signal needed"   | Intersection / Signal |
| 10             | Entrance to Shepherd's Crook Golf Course  | "better signage on turn lane for Shepherd's Crook turn in"    | Misc. Information     |



